

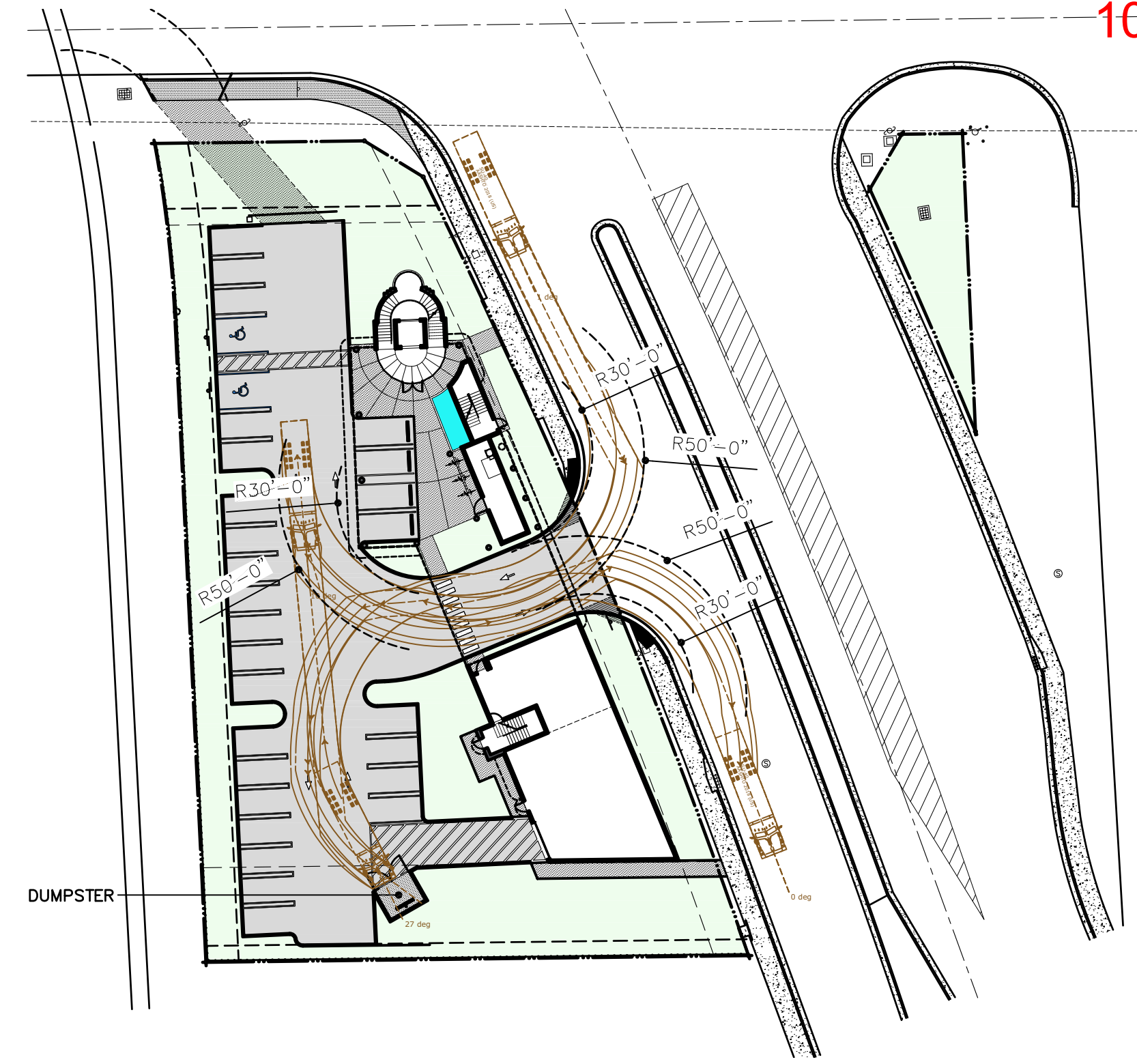
Digital
signed by
Daniel J. Pardo
Date: 10/02/2024
16:07:25
STATUS: REVIEWED
-04'00"

01.25.23 LT DRC Review Submittal
09.28.24 GC DRC Comment Response 1
Job AZ165
Sheet 10.08.21

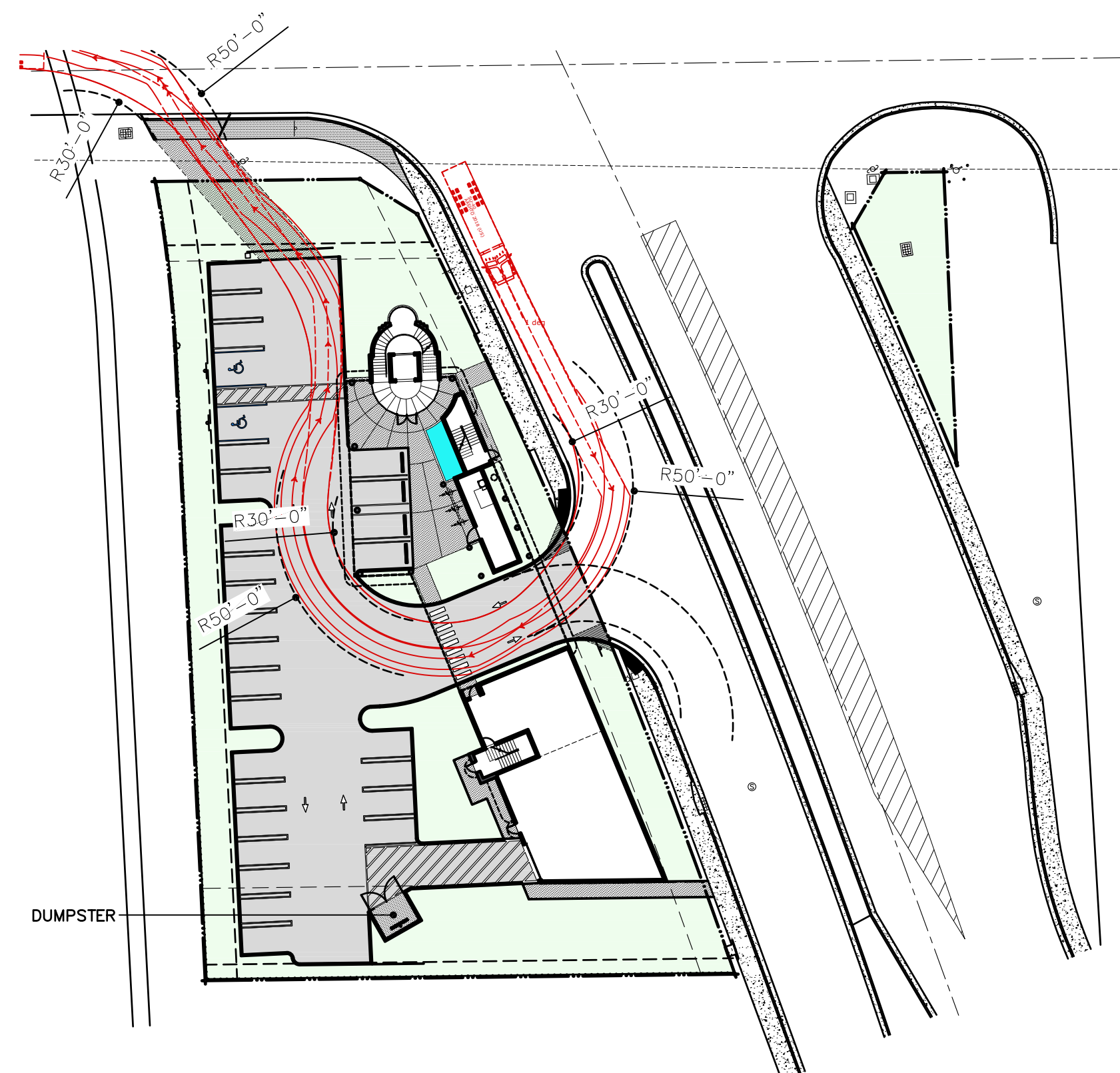
Consulting Engineer

Proposed Offices
Power Petroleum HQ
Owner: 201 SW 12 Ave, Inc.
201 SW 12 Ave, Pompano Beach, 33069

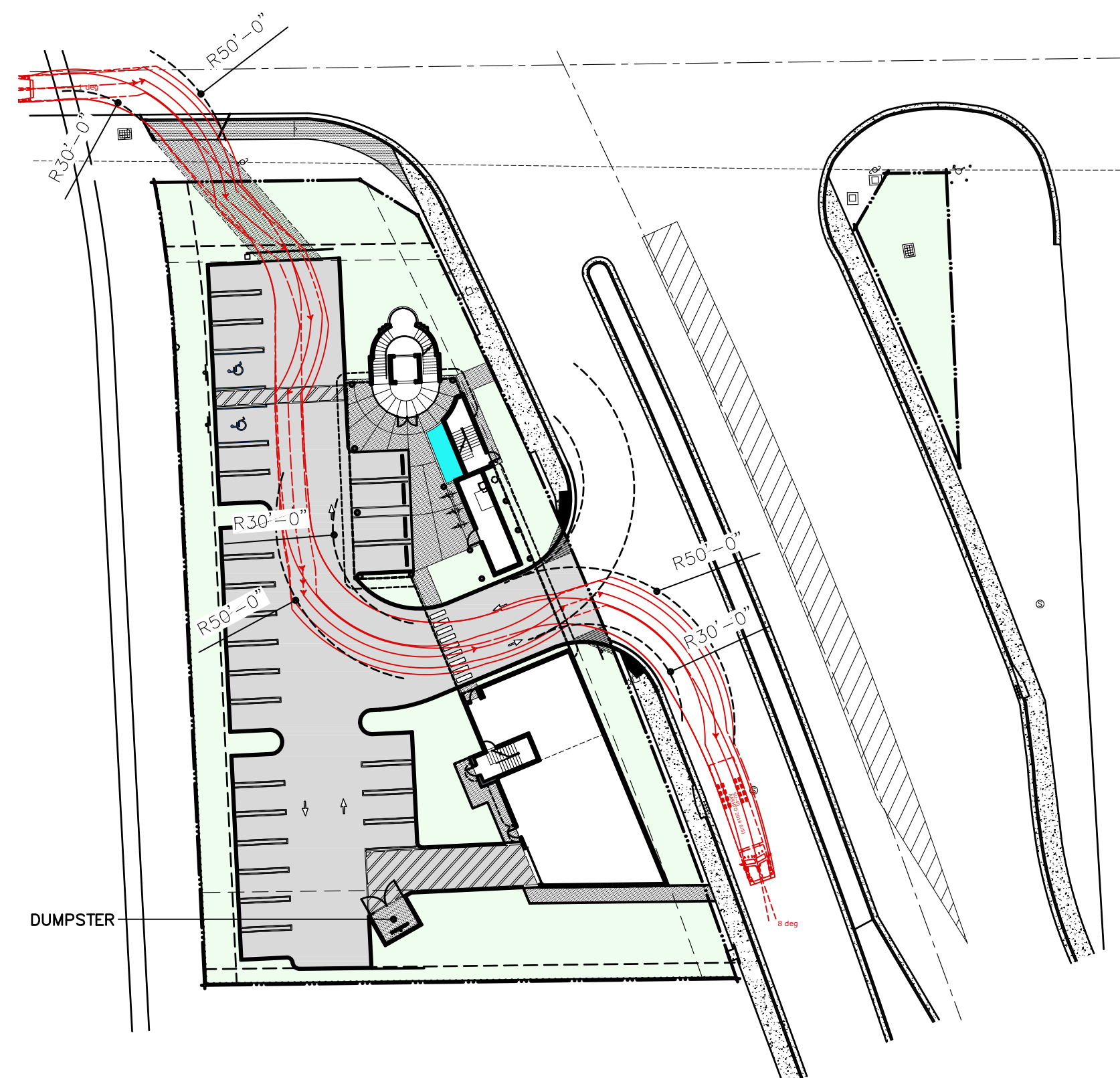
G102



GARBAGE TRUCK PATH 1
SCALE: 1" = 40'-0"

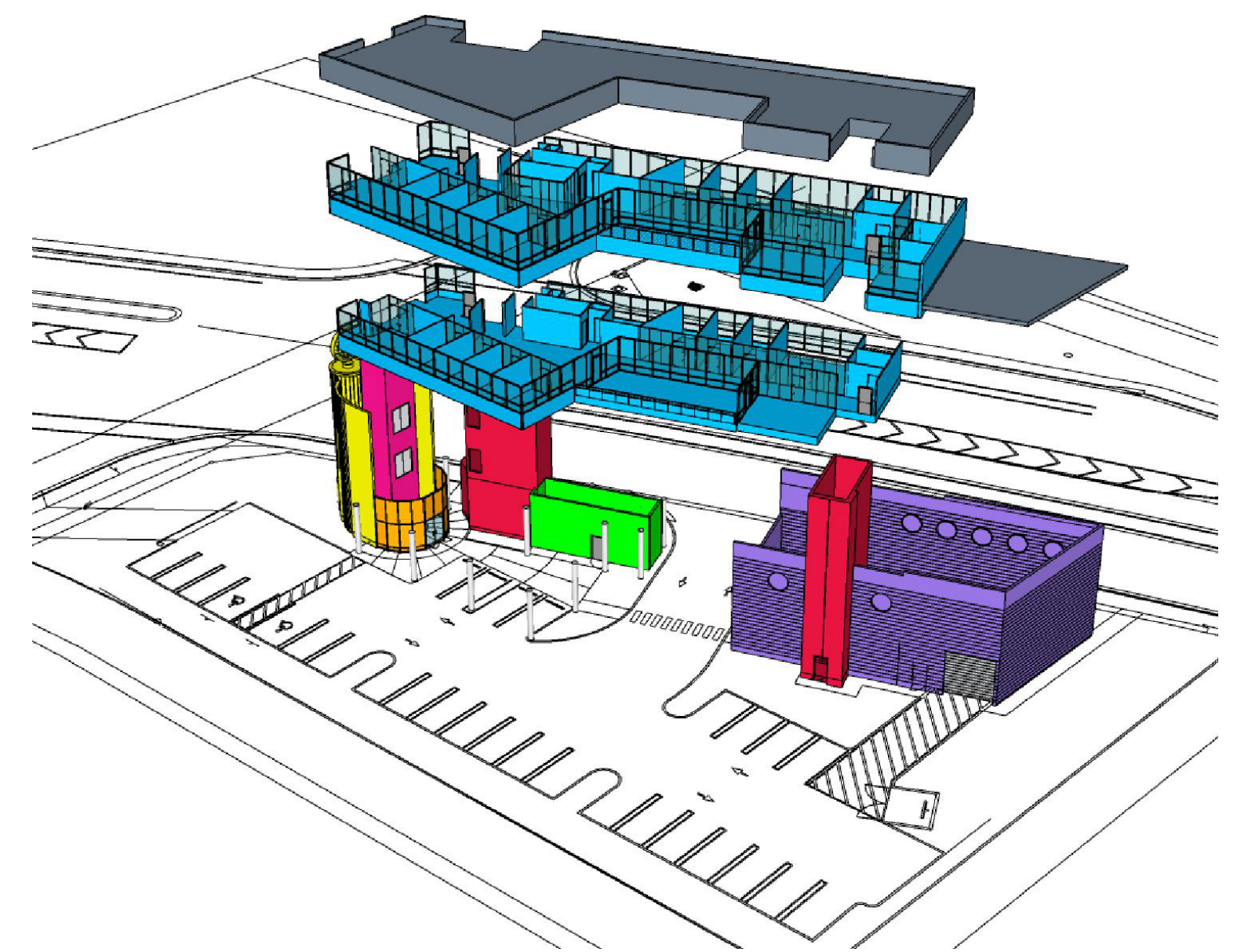


FIRE TRUCK PATH 2
SCALE: 1" = 40'-0"



FIRE TRUCK PATH 1
SCALE: 1" = 40'-0"

- WAREHOUSE
- SERVICES
- LOBBY
- OFFICES
- MAIN STAIRCASE
- EGRESS STAIRS
- ELEVATOR
- ROOF SPACE



PROGRAMMATIC AXONOMETRIC
NTS